



**Cel-Fi by Nextivity
Emergency Response Solutions for
Verizon Business, Government
(SLED) & Frontline teams.**

Call to learn more:
813-751-2039

Challenges of Cellular Coverage



It does not matter who your carrier is, challenges exist, and in an emergency you need a solution!

Cellular signals are inhibited or blocked by trees, hills, building materials, and bad weather — regardless of the operator.



Brick

Concrete

Walls

Building
Materials
Block
Reception



Mountains



Buildings



Metal



LEED Certified Glass

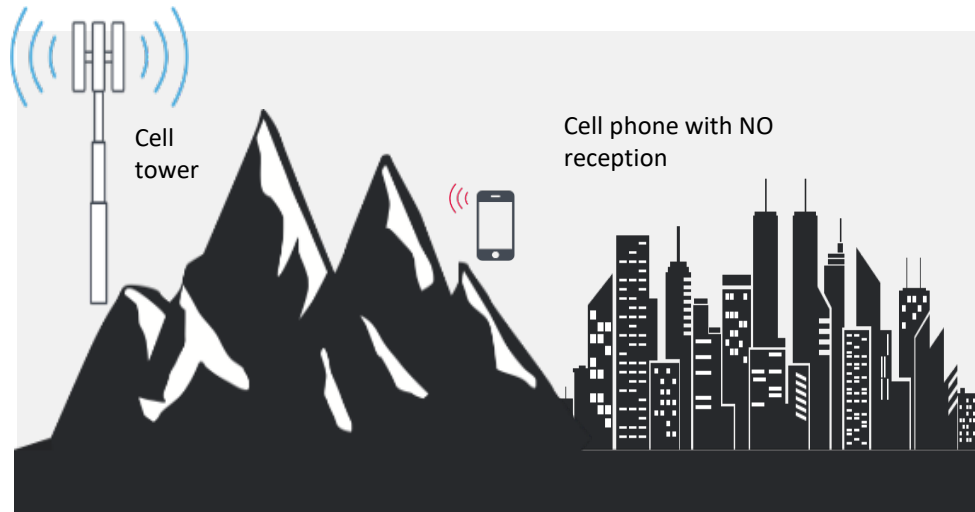
Obstruction
from
Tower



Weather



Trees



Cel-Fi Smart Cellular Coverage Solutions



Cel-Fi DUO+
Smart Mobile Booster



Cel-Fi GO
Smart Signal Booster



Cel-Fi QUATRA Family
Active DAS Hybrid Enterprise Solution



Performance Leadership Ease of Install Leaders in Value Fastest Project Timeline Carrier Grade

Cel-Fi : Key Market Segments



SMB, Industrial, &
Enterprise



Consumer &
Mobile Solutions



Public Safety &
Emergency Response

Public Safety - Emergency Response – Healthcare sub-use cases:

- Check-in Areas, Initial Screening and triage & Drive through testing Canopies where additional signal/backhaul is required to support increased users
- Field Tent Hospitals, Buffer Zones, Overflow waiting Rooms spaces, Surge Tents Quarantine, Containment, & Isolation areas.
- Shelters, Refugee Camps, Shipping & Receiving areas
- Asset tracking enhancement for Medical Equipment storage (IoT/M2M)
- Emergency Operations & Incident Command centers for Business Continuity with LTE failover



Use Case: Mobile Bundles – Born from Initial Request for **Federal Agencies** for Coverage in Remote Areas

Operational and safety enhancements provided:

- Primary: Coverage when operating inside vehicle
- Secondary: Coverage in the area around the vehicle, up to 10+ meters away



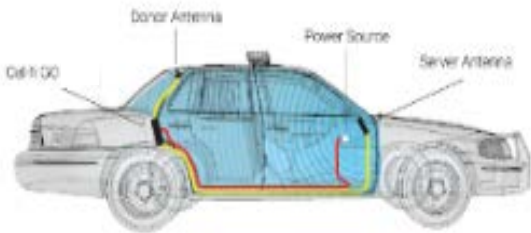
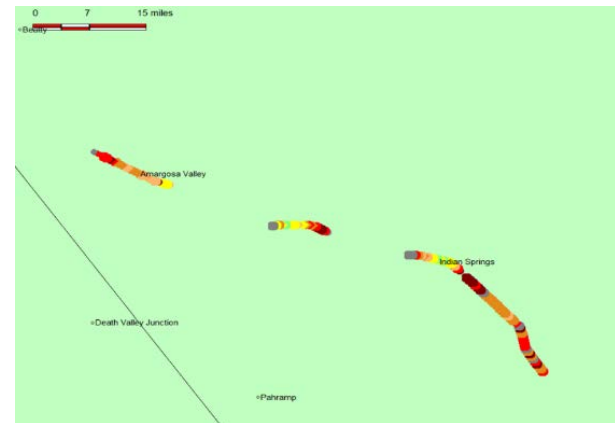
Immediate Satisfaction:

“Amazing! I got 10 miles radius of additional coverage, in my patrol area.”

***Coverage in a rural area.
Coverage around the working area.***

Before

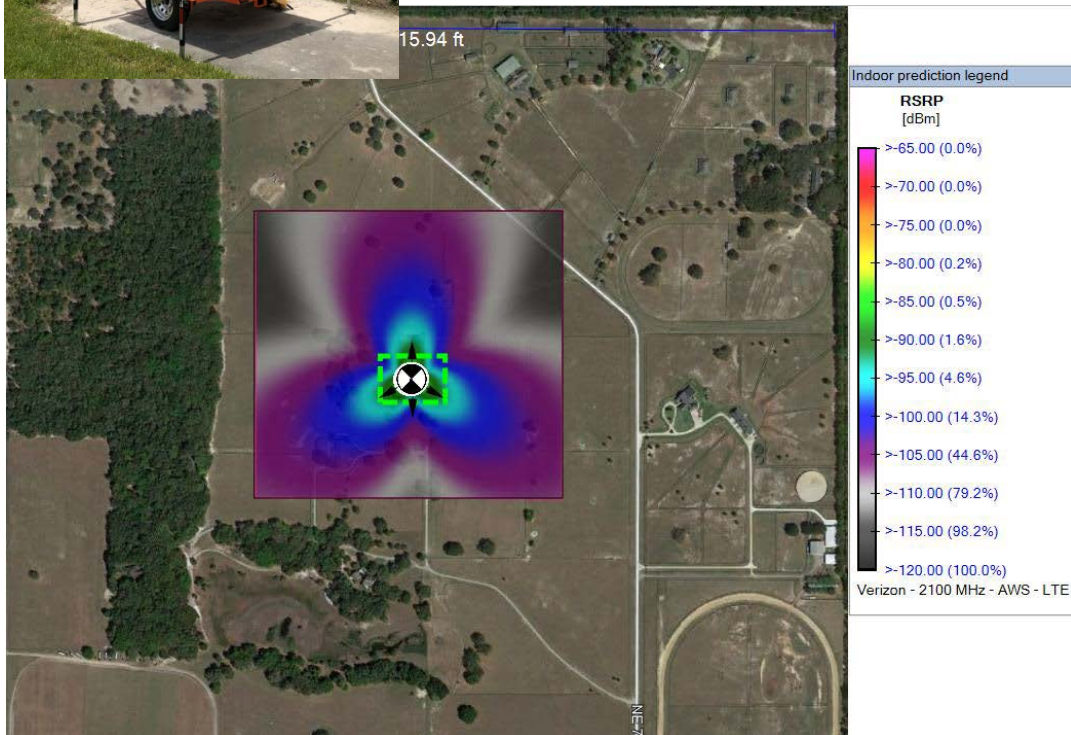
After



Use Cases: Portable Bundles for Temporary Coverage needs – “SBOW”



- **Remote Coverage:** Low cost “COW” alternative for areas at the edge of the cell that have no coverage.
- **Key Use Cases:** Remote communications for rural areas with no access to backhaul
 - Construction, Oil and Gas, Agriculture and others.
- **Voice and Data:** 3G/4G support with gain up to 100 dB



- **Solutions Features:** Configurable solutions which can create different zones of coverage that include additional technologies: Battery backup, Solar Power, Wi-Fi, Digital Surveillance.
- **Integrated Management:** Switch from Stationary or Mobile Mode with Cel-Fi WAVE setup and management app for GO. Install and optimize with the innovative WAVE portal and smartphone apps

Use Cases: Portable Bundles for impromptu Coverage needs – “MPA”



- **Remote Coverage:** up to 15K Sq./Ft. per Unit
- **Key Use Cases:** Ideal for law enforcement, Department of Forestry, & mobile command centers.
- **Voice and Data:** 3G/4G support with gain up to 100 dB
- **Solution Features:**
 - Portable - Dual Power AC/Battery
 - Customizable coverage footprints.
- **Integrated Management:** Switch from Stationary or Mobile Mode with Cel-Fi WAVE setup & management app for GO. Install and optimize with the innovative WAVE portal and smartphone apps

Cel-Fi GO – DH Portable Solutions



CELLULAR AMPLIFIERS
And TRIPOD ANTENNA SOLUTIONS



MPA
A portable connectivity solution that boosts cellular network coverage for voice and data communications.
Enhances cellular coverage in both fixed and mobile applications.
MPA Go M - MSRP \$1,899
Colors: Yellow & Black

MAST
Quick deployable 10'+ telescoping tripod
With omni and directional high gain antennas
MSRP \$1,999

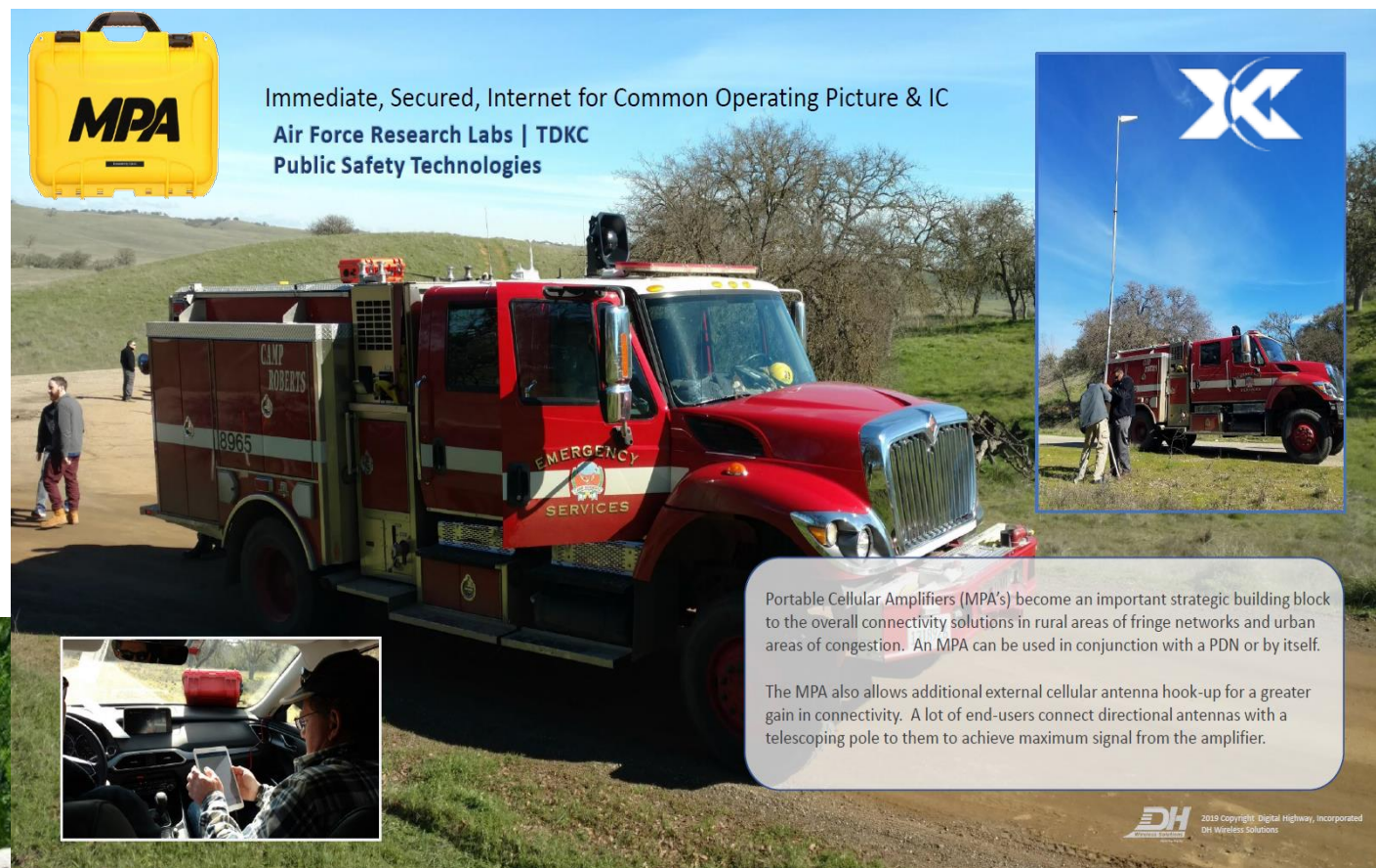


2020 Copyright Digital Highway, Incorporated
DH Wireless Solutions



Use Cases: "MPA" in action

Ruggedized, self contained
Portable, lightweight, easy to setup and configure



Immediate, Secured, Internet for Common Operating Picture & IC
Air Force Research Labs | TDKC
Public Safety Technologies

Portable Cellular Amplifiers (MPA's) become an important strategic building block to the overall connectivity solutions in rural areas of fringe networks and urban areas of congestion. An MPA can be used in conjunction with a PDN or by itself.

The MPA also allows additional external cellular antenna hook-up for a greater gain in connectivity. A lot of end-users connect directional antennas with a telescoping pole to them to achieve maximum signal from the amplifier.

DH
2019 Copyright Digital Highway, Incorporated
DH Wireless Solutions

Rural Fringe WILDERNESS

Cellular boosting where cell signal is minimal
Base Camps and Command Cells

- Search and Rescue
- Disaster and Recovery
- Training and Exercises
- Mobile and Fixed Missions



Closed Case Solution to withstand heavy precipitation and a range of cold and hot environmental factors.

A safe cost effective way to improve coverage

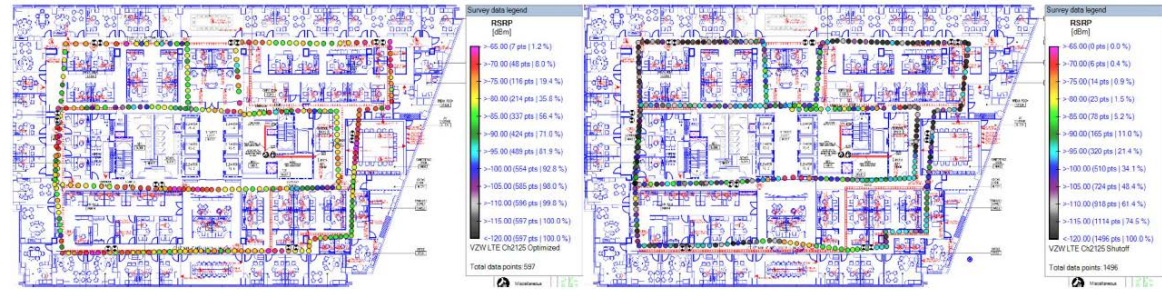
Use Cases: Fixed Bundles - Fire Station & Police Station



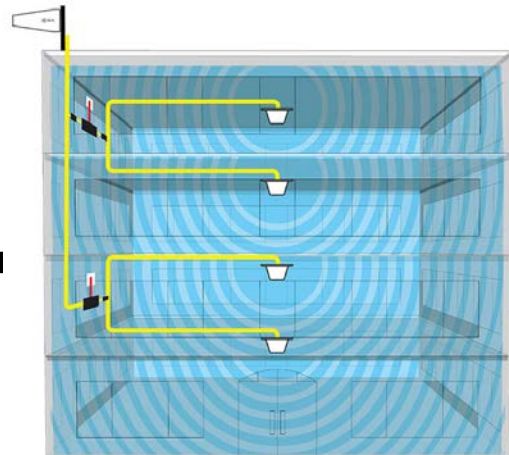
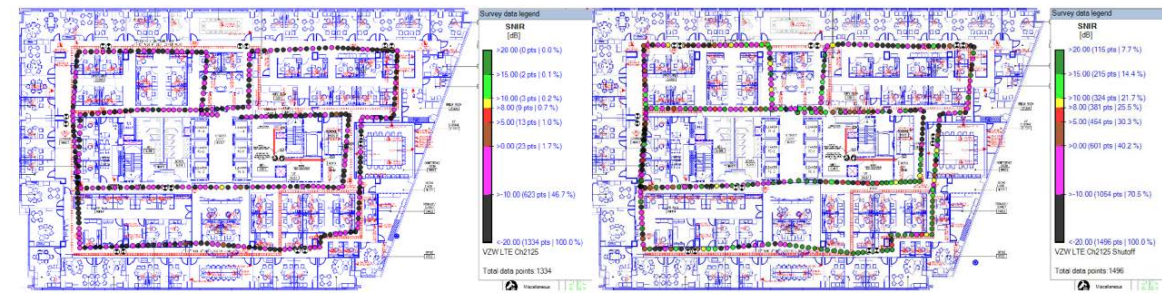
LTE 2100 MHz Ch2125



RSRP



SINR



Use Cases: Scalable Emergency Response Solutions for Enterprise Buildings



Government Agencies



Police Stations



911 Call Centers



Military Bases

Bigger Buildings, Need Bigger Solutions: Cel-Fi QUATRA 1000 / 2000 / 4000

Cellular Coverage Solution for Enterprise



Model Number: Q34

Band Configurations:

- Bands 2/4/5/13 or 4/5/12/13/25

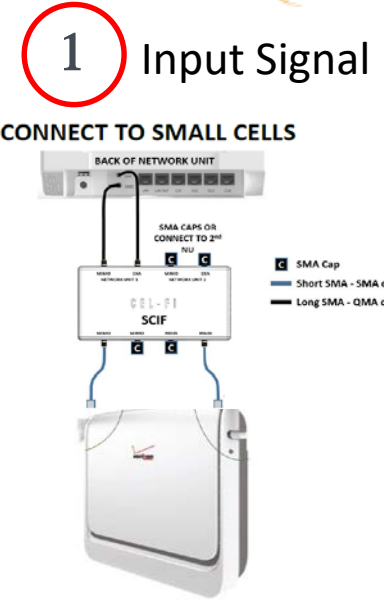
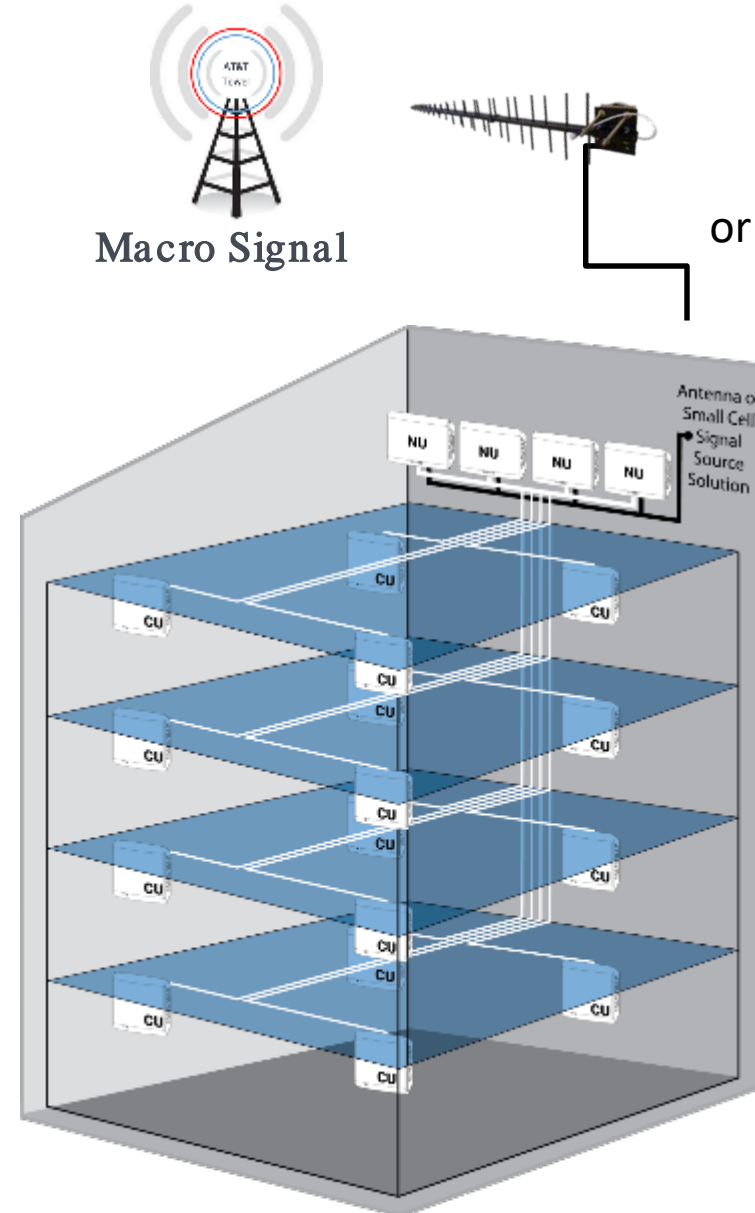


Value Proposition:

- Scalable active DAS hybrid solution
- Easiest-to-deploy and manage with regular IT skills
- Lowest installed cost per Sq Ft of coverage
- Carrier-approved and unconditionally network safe for voice & data
- 100 dB gain; signal maximized by AntennaBoost
- Self-configuring and self-optimizing

Solves Basic Problems

- Uneconomic to Install DAS Solutions below 500,000 ft²
- Addresses the Issues of Poor Coverage Distribution with Small Cell Only Solutions



- 1 Input Signal
CONNECT TO SMALL CELLS
- 2 Installation
- 3 Coverage Footprint

NU = Network Unit | CU = Coverage Unit | CABLING = CAT5e