



Digi EX15

Branch connectivity in a compact, affordable, all-in-one solution

Digi EX15 offers gigabit Ethernet and Wi-Fi connectivity for retailers and other organizations that cannot tolerate network downtime and the negative impact on revenue streams and brand reputation — easy to deploy and centrally managed via **Digi Remote Manager**® (Digi RM), which is included in your **Digi 360** solution. (See page 2.)

A suite of upgradeable **Digi CORE**® plug-in LTE modems lets users select the cellular speeds that best fit their business requirements, including LTE Cat 4 and LTE-Advanced Cat 7.

Combine a Digi EX15 with a dedicated wireline connection to ensure dual ISP connectivity, maximum uptime and complete business continuity for devices that must be “always on,” such as mobile kiosks, digital signs and POS systems.

You can use Digi EX15 for primary LTE connectivity, in addition to dual-connectivity/failover. Additionally, the serial port can provide out-of-band (OOB) management for remote, off-premise equipment.

Part of Digi enterprise solutions, this router comes with industry-leading software, including **Digi Accelerated Linux** (DAL OS), **Digi TrustFence**® security framework, and the **Digi RM** configuration and management platform.

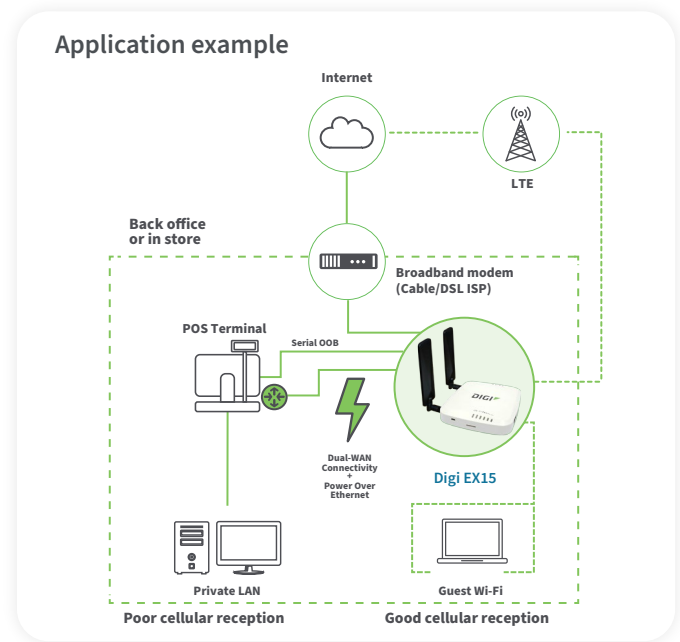
Digi RM provides centralized control, management, security, edge intelligence and day-to-day network management for hundreds and thousands of distributed devices.

For fast and easy installations, a site survey battery, PoE injector and mounting accessories are included for proper placement based on optimal signal strength.

Key features, benefits and applications

- LTE-certified **Digi CORE plug-in modem**
- Scalable cellular technology allows you to match speeds to applications and future proof your network
- Optimized connectivity to any Ethernet device
- Battery pack for site survey to identify optimal signal strength placement
- Multiple mounting options and accessories
- Serial port for remote, out-of-band management
- Zero-touch provisioning and cloud management
- Meets the U.S. government **FIPS 140-2** cybersecurity standard
- Includes the **Digi 360** solution with warranty, customer care and **Digi Remote Manager** cloud management, enabling easy setup, mass configuration and management
- Value-added services include **Digi Containers** to enable powerful, cost-efficient applications and **Digi WAN Bonding** for 5G/LTE WAN aggregation with immediate failover

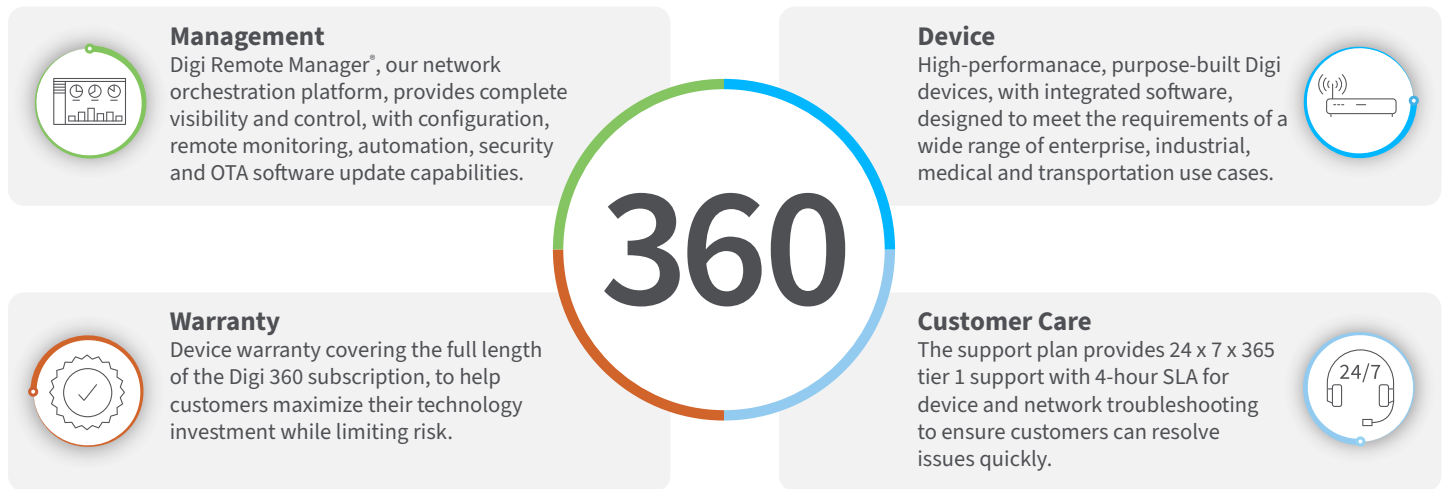
Related Digi enterprise router solutions



DIGI EX15 WITH DIGI 360

Digi 360

Digi 360 offers comprehensive IoT packaged solutions, including purpose-built devices, software and services to help customers optimize their IoT investments and maximize ROI. These solutions are designed to simplify IoT complexity, and ease the challenges enterprises face in configuring, deploying and managing their IoT initiatives. Your Digi 360 subscription is included with the purchase of **Digi EX15**, complete with Digi Remote Manager, warranty and customer care. [Learn more at digi.com/digi360](http://digi.com/digi360).



Value-Added Services

Digi Containers



Digi Remote Manager enables deployment of custom applications via containers

Digi Containers simplify and centralize the process of building, deploying and running custom applications on devices managed with **Digi Remote Manager** as the central portal. Containers with custom programs or Python applications can be loaded via Digi RM on any device running the **Digi Accelerated Linux** operating system (DAL OS).

As an add-on service to Digi Remote Manager, Digi Containers are a powerful capability implemented via Lightweight Linux Containers (LXC). LXC tools enable developers to package up a custom application, with its dependencies and configuration, into a lightweight, portable bundle that shares only the running kernel with the host device.

Digi WAN Bonding



Resilient connectivity and maximum performance across multiple connections

Digi WAN Bonding combines multiple connections into a seamless and resilient connectivity solution that ensures optimal performance and maximum uptime anywhere around the world.

Digi devices provide a range of connectivity options including cellular failover with features such as **Digi SureLink**®, policy-based routing and interface bonding. These features are excellent at preventing any external network failures from causing downtime.

*Digi Containers and Digi WAN Bonding are available as value-added services with Digi Remote Manager.

DIGI EX15 WITH DIGI 360

Digi 360 Management and Security

Digi Accelerated Linux (DAL OS)

DAL OS is Digi's standard operating system integrated into Digi **Enterprise (EX)**, **Industrial (IX)** and **Transportation (TX)** routers, **console servers** and **USB-connected devices**. Developed for speed and simplicity, DAL OS enables advanced capabilities that support today's demanding applications. [Learn more at digi.com/DAL](https://www.digi.com/DAL).

Digi Remote Manager (Digi RM)

Digi Remote Manager is a proven technology platform that brings networks to the next level, empowering networks — and the people who manage them — to work smarter. Digi RM transforms a multitude of dispersed IoT devices into a dynamic, intelligent network. It's easy to deploy, monitor and diagnose thousands of mission-critical devices from a single point of command on a desktop, tablet or phone. All the while, software-defined security diligently safeguards your entire Digi ecosystem. [Learn more at digi.com/digi-remote-manager](https://www.digi.com/digi-remote-manager).

Digi RM infrastructure and security

- Hosted in a commercial-grade cloud server environment that meets SOC 1^o, SOC 2^o and SOC 3^o standards
- Superior availability, operating at 99.9% or greater uptime
- Open APIs are available to support application development
- Comprehensive security controls to protect your data
- Member of the Center for Internet Security^o (CIS^o)
- Enables compliance with security frameworks like ISO27002, HIPAA, NIST and more
- Earned Skyhigh's CloudTrust™ Program highest rating of Enterprise-Ready

Digi TrustFence

The Digi TrustFence device security framework simplifies the process of securing multiple connected devices.



Designed for mission-critical applications, **Digi TrustFence** enables users to easily integrate device security, device identity, and data privacy capabilities into product design.

Digi TrustFence security for IoT devices is designed to grow and adapt with new and evolving threats.

[Learn more at digi.com/trustfence](https://www.digi.com/trustfence).



DAL OS and Digi RM capabilities

- **DAL OS with Digi Remote Manager:** Remote console access, configuration templates, HTTP proxy, device event logs, configurable maintenance window
- **Serial:** Modbus, serial-over-TCP/UDP
- **Customization:** Python 3, Python pip, PyCharm integration, shell scripting, containers, MQTT client
- **Troubleshooting:** iPerf and nttcp bandwidth testing, Find Me tool
- **GNSS:** NMEA/TAIP location forwarding to servers, geo-fencing
- Activate, monitor and diagnose your mission-critical devices through a single portal
- Schedule key operations — including firmware updates and file management — on a single device or on a group of devices, keeping your network functionality up-to-date and maintaining compliance standards
- Manage edge devices out-of-band via console terminal access
- Monitor equipment health and connectivity across deployments
- Create detailed reports and real-time alerts for specified conditions
- Integrate device data through open APIs to gain deeper insights and control with third-party applications
- Report and alert on performance statistics, including connection history, signal quality, latency, data usage and packet loss

Built-in Security. Delivered.

- **Secure boot:** Programs and code running on the device are validated to be from an approved source or manufacturer
- **Protected hardware ports:** Internal and external I/O ports are hardened and access-controlled to prevent unwanted intrusion
- **Authentication:** Data authentication and device identity management options, with updated user and password settings
- **Secure connections:** Latest encryption protocols for data in motion and over-the-air (OTA) transmissions to ensure integrity
- **Ongoing monitoring and support:** Ongoing threat measurement and monitoring services, with external security audits

DIGI EX15 WITH DIGI 360 Specifications



Manage and configure Digi EX15
with Digi Remote Manager

SPECIFICATIONS		DIGI EX15 WITH DIGI 360*
CELLULAR CONNECTIVITY**		
DIGI CORE PLUG-IN LTE MODEMS	LTE Cat 4 (Global): B1, B2, B3, B4, B5, B7, B8, B12, B13, B18, B19, B20, B25, B26, B28, B39, B40, B41; 3G: B1, B2, B4, B5, B6, B8, B19; 2G EDGE / GPRS: 850 / 900 / 1800 / 1900 MHz; Transfer rate (max): 150 Mbps, 50 Mbps up LTE-A Cat 7 (US): B2, B4, B5, B7, B12, B13, B25, B26, B41, B42, B43, B48, B66, B71; WCDMA: B2, B5; Transfer rate (max): 300 Mbps, 150 Mbps up	
CONNECTORS	(2) 50 Ω SMA (center pin: female)	
SIM SLOTS	(2) Mini-SIM (2FF); software selectable, hardware switchable	
SOFTWARE AND MANAGEMENT*		
REMOTE MANAGEMENT	Digi Remote Manager ; SNMP v3 (user installed/managed), encrypted SMS	
LOCAL MANAGEMENT	WebUI (HTTPS/HTTPS); CLI (SSH, serial port)	
PROTOCOLS	RIP, RIPng, OSPFv2, OSPFv3, BGP, Babel, IS-IS	
MANAGEMENT / TROUBLESHOOTING TOOLS	FTP client, SCP; protocol analyzer with PCAP for Wireshark; event logging with syslog and SMTP client; NTP/SNTP	
MEMORY	256 MB RAM, 512 MB flash	
ETHERNET		
PORTS	(2) RJ-45; 10/100/1000/2500 Mbps (auto-sensing)	
WI-FI (OPTIONAL)		
CONNECTIVITY	2 x 2 MIMO 2.4/5 GHz: 802.11 b/g/n 2.4 GHz; 802.11 n/a/ac 5 GHz	
SERIAL		
PORTS	(1) RS-232 (RJ-45)	
PHYSICAL		
DIMENSIONS	142 mm x 128 mm x 31 mm (5.6 in x 5.0 in x 1.2 in)	
WEIGHT	0.2 kg (7.0 oz)	
STATUS LEDS	LAN (link = solid, flashing = act), WAN (link = solid, flashing = act), LTE, 5 signal, SIM 1 and 2 LEDs	
ENCLOSURE	Plastic	
POWER REQUIREMENTS		
POWER INPUT	18 VDC, 1 A, reverse polarity protection	
INCLUDED ACCESSORIES	Includes PSU, antennas, and remote mounting kit: temporary battery, passive PoE injector, mounting bracket and accessories	
ENVIRONMENTAL		
OPERATING TEMPERATURE	0 °C to 40 °C (32 °F to 104 °F)	
RELATIVE HUMIDITY	5% to 95% (non-condensing)	
APPROVALS**		
CELLULAR	PTCRB; US: AT&T, T-Mobile, Verizon; Canada; Europe visit digi.com/resources/certifications for latest certifications and updates	
EMISSIONS / IMMUNITY	Part 15, Subpart B, Class A; CE, RCM; CAN ICES-3(B)/NMB-3(B)	
WARRANTY***		
PRODUCT WARRANTY	1-year	

*Includes the **Digi 360** solution for **Digi EX15** (1-year) with **Digi Remote Manager**, **warranty** and **customer care**.

**Visit digi.com/resources/certifications for latest approvals and updates.

***Product warranty can be extended with **Digi 360** extensions or renewals.

DIGI EX15 WITH DIGI 360 Product Photos

Digi EX15 Photos

Digi EX15 — Cat 4



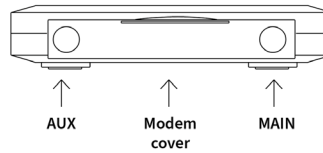
Digi EX15 — Cat 7



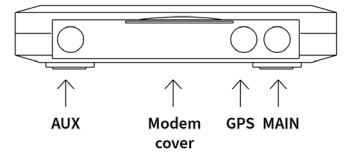
Digi EX15 — Cat 4 left



Digi EX15 — Cat 4 left



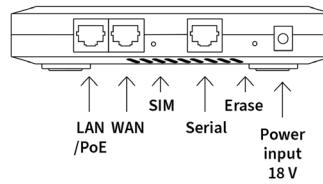
Digi EX15 — Cat 7 left



Digi EX15 — Cat 4 right



Digi EX15 — right



Featured Technologies



*FirstNet® and the FirstNet logo are registered trademarks and service marks of the First Responder Network Authority. All other trademarks are the property of their respective owners.

DIGI EX15 WITH DIGI 360

Part Numbers

PART NUMBERS	DIGI EX15 WITH DIGI 360*
EX15-WXG4-GLB	Digi EX15 — 2-port GigE; RJ-45, RS-232, Wi-Fi; LTE / HSPA+ Cat 4; Cellular certifications: PTCRB, AT&T, Verizon, Telus, US, Canada, Europe
EX15-XXG4-GLB	Digi EX15 — 2-port GigE; RJ-45, RS-232; LTE / HSPA+ Cat 4; Cellular certifications: PTCRB, AT&T, Verizon, Telus, US, Canada, Europe
EX15-WX07-OUS	Digi EX15 — 2-port GigE; RJ-45, RS-232, Wi-Fi; LTE-A / HSPA+ Cat 7; Cellular certifications: PTCRB, AT&T, T-Mobile, Verizon, US, Canada
EX15-XX07-OUS	Digi EX15 — 2-port GigE; RJ-45, RS-232; LTE-A / HSPA+ Cat 7; Cellular certifications: PTCRB, AT&T, T-Mobile, Verizon, US, Canada

*Includes Digi 360 solution for Digi EX15 (1-year) with Digi Remote Manager, warranty and customer care.

**Visit digi.com/resources/certifications for latest approvals and updates.

PART NUMBERS	DIGI CORE PLUG-IN LTE MODEMS
1002-CMG4-GLB	Digi CORE plug-in LTE modem — LTE / HSPA+ Cat 4; Cellular certifications: PTCRB, AT&T, Verizon, Telus, US, Canada, Europe
1003-CM07-OUS	Digi CORE plug-in LTE modem — LTE-A / HSPA+ Cat 7; Cellular certifications: PTCRB, AT&T, T-Mobile, Verizon, US, Canada

PART NUMBERS	AVAILABLE ACCESSORIES***
76002112	18 V PSU power supply with barrel jack connector (replacement)
500157	Cable assembly passive POE power injector, white 2.1 mm barrel connector (replacement)
560083	Temporary site survey battery pack, 9 V with 152.4 mm power lead, 2.1 mm barrel connector (replacement)
170011	(1) Antenna extender: 48 mm circle antenna magnetic base (base connector: SMA jack); cable: low loss CLF; 50 cm length with SMA plug (replacement for optional Wi-Fi enabled models)
170017	(2) Cellular antennas (replacement)
76002114	Cellular antenna — 600 MHz to 6 GHz, swivel, black
76002115	Cellular antenna — 600 MHz to 6 GHz, white
ASB-6310-DX00-RMK	Remote mounting kit: two cable ties, two narrow ceiling rail snaps, two wide ceiling rail snaps, one POE cable assembly, one temporary site survey batter pack

***Sold separately, unless otherwise noted. Digi EX15 models supporting LTE Cat 4 and LTE-Advanced Cat 7 and Cat 11 require two cellular antennas.

PART NUMBERS	DIGI 360 EXTENSIONS AND RENEWALS
DIGI360-EX15-EXT-2YR	Digi 360 extension for two additional years for Digi EX15
DIGI360-EX15-EXT-4YR	Digi 360 extension for four additional years for Digi EX15
DIGI360-EX15-REN-1YR	Digi 360 renewal for one additional year for Digi EX15
DIGI360-EX15-REN-3YR	Digi 360 renewal for three additional years for Digi EX15
DIGI360-EX15-REN-5YR	Digi 360 renewal for five additional years for Digi EX15

DIGI EX15 WITH DIGI 360

Part Numbers

PART NUMBERS	VALUE-ADDED SERVICES
DIGI-RM-PRM-CS	Digi Containers subscription — 1-year subscription
DIGI-SRV-WB-TIER1-1YR	Digi WAN Bonding subscription with 100 Mbps max throughput — 1-year subscription
DIGI-SRV-WB-TIER2-1YR	Digi WAN Bonding subscription with 200 Mbps max throughput — 1-year subscription
DIGI-SRV-WB-TIER3-1YR	Digi WAN Bonding subscription with 1 Gbps max throughput — 1-year subscription

For more information, please visit digi.com.



For more information about Digi EX15,
visit digi.com/ex15.

877-912-3444 | 952-912-3444

